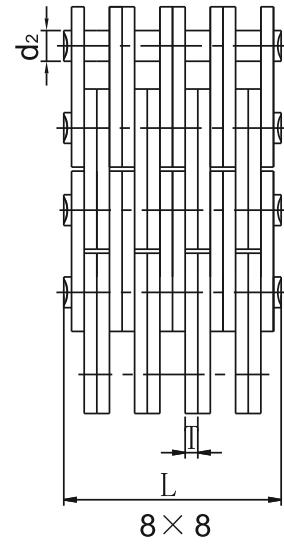
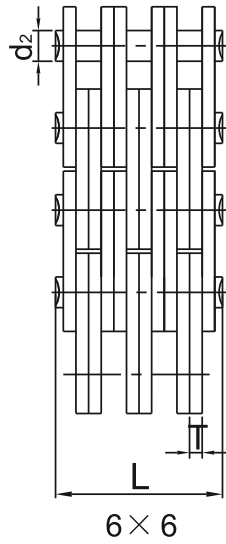
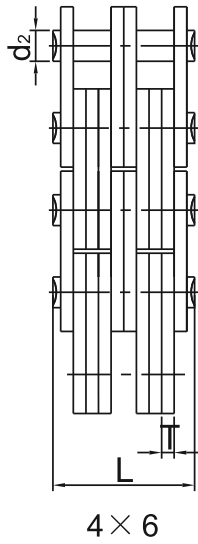
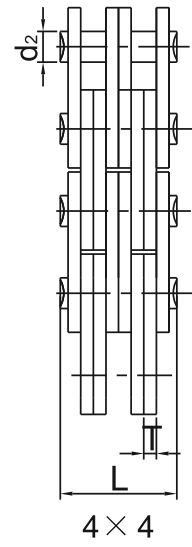
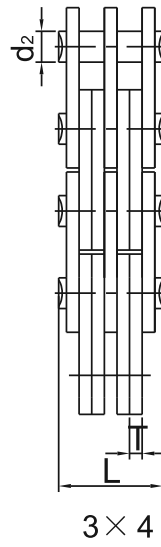
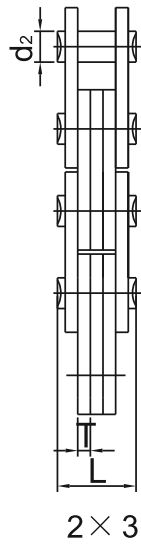
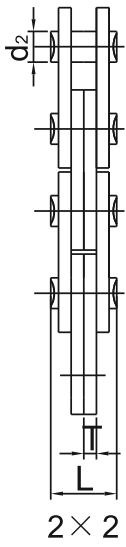




**CATENE FLEYER**  
***FLEYER / LEAF CHAINS***

Catene ASA **FLEYER serie AL** / **ANSI AL Leaf Chains Series**


Catene ASA **FLEYER serie AL / ANSI AL Leaf Chains Series**

| Catena<br>Chain | Passo<br><i>Pitch</i> | Composizione<br>piastre<br><i>Plates<br/>lacing</i> | Altezza<br>piastra<br><i>Plate<br/>depth</i> | Spessore<br>piastra<br><i>Plate<br/>thickness</i> | Diametro<br>Perno<br><i>Pin<br/>diameter</i> | Largh.<br>catena<br>ribadita<br><i>Riveted<br/>chain<br/>width</i> | Carico di<br>rottura<br>min.<br><i>Ultimate<br/>tensile<br/>strength</i> | Carico di<br>rottura<br>medio<br><i>Average<br/>tensile<br/>strength</i> | Peso al<br>metro<br><i>Weight<br/>per meter</i> |
|-----------------|-----------------------|---|--|---|--|--|--|--|---|
|                 | P                     |   | $h_2$<br>max                                 | T   | $d_2$<br>max                                 | L<br>max   | Q<br>min   | Q <sub>0</sub>   | q<br>≈  |
|                 | mm                    |   |  | mm  | mm   | mm   | kN   | kN   | kg/m  |
| AL422           | 12.70                 | 2x2   | 10.40  | 1.50  | 3.96   | 7.90   | 14.10  | 16.90  | 0.39  |
| AL444           |                       | 4x4   |  |   |  | 14.40  | 28.20  | 35.20  | 0.74  |
| AL466           |                       | 6x6   |  |   |  | 20.50  | 42.30  | 52.70  | 1.10  |
| AL522           | 15.875                | 2x2   | 12.80  | 2.06  | 5.08   | 10.30  | 22.00  | 27.50  | 0.61  |
| AL544           |                       | 4x4   |  |   |  | 18.90  | 44.00  | 55.00  | 1.19  |
| AL566           |                       | 6x6   |  |   |  | 26.90  | 66.00  | 82.50  | 1.79  |
| AL622           | 19.05                 | 2x2   | 15.60  | 2.44  | 5.94   | 12.40  | 37.00  | 44.40  | 0.86  |
| AL644           |                       | 4x4   |  |   |  | 22.70  | 64.00  | 76.80  | 1.69  |
| AL666           |                       | 6x6   |  |   |  | 32.40  | 101.00   | 121.20   | 2.52  |
| AL822           | 25.40                 | 2x2   | 20.50  | 3.26  | 7.92   | 16.00  | 56.70  | 68.60  | 1.54  |
| AL844           |                       | 4x4   |  |   |  | 29.40  | 113.40   | 135.60   | 3.00  |
| AL866           |                       | 6x6   |  |   |  | 42.50  | 170.00   | 202.30   | 4.46  |
| AL1022          | 31.75                 | 2x2   | 25.60  | 4.00  | 9.53   | 19.60  | 88.50  | 107.10   | 2.37  |
| AL1044          |                       | 4x4   |  |   |  | 35.90  | 177.00   | 203.60   | 4.68  |
| AL1066          |                       | 6x6   |  |   |  | 52.30  | 265.00   | 315.80   | 7.00  |
| AL1222          | 38.10                 | 2x2   | 30.50  | 4.80  | 11.10  | 24.30  | 127.00   | 151.10   | 3.65  |
| AL1244          |                       | 4x4   |  |   |  | 43.80  | 254.00   | 299.70   | 7.05  |
| AL1266          |                       | 6x6   |  |   |  | 63.00  | 381.00   | 426.30   | 10.44   |
| AL1422          | 44.45                 | 2x2   | 36.40  | 5.65  | 12.70  | 28.07  | 151.23   | 182.37   | 4.79  |
| AL1444          |                       | 4x4   |  |   |  | 51.30  | 372.70   | 413.60   | 10.34   |
| AL1466          |                       | 6x6   |  |   |  | 74.56  | 559.00   | 620.40   | 15.16   |
| AL1622          | 50.80                 | 2x2   | 41.60  | 6.45  | 14.27  | 32.94  | 191.26   | 231.13   | 5.98  |
| AL1644          |                       | 4x4   |  |   |  | 58.06  | 471.00   | 522.80   | 12.98   |
| AL1666          |                       | 6x6   |  |   |  | 84.46  | 706.00   | 783.60   | 19.41   |

Catene ISO **FLEYER serie UF / ISO UF Leaf Chains Series**

| Catena<br>Chain | Passo<br><i>Pitch</i> | Composizione<br>piastre<br><i>Plates<br/>lacing</i> | Altezza<br>piastra<br><i>Plate<br/>depth</i> | Spessore<br>piastra<br><i>Plate<br/>thickness</i> | Diametro<br>Perno<br><i>Pin<br/>diameter</i> | Largh.<br>catena<br>ribadita<br><i>Riveted<br/>chain<br/>width</i> | Carico di<br>rottura<br>min.<br><i>Ultimate<br/>tensile<br/>strength</i> | Peso al<br>metro<br><i>Weight<br/>per meter</i> |
|-----------------|-----------------------|---|--|---|--|--|--|---|
|                 | P                     |   | $h_2$<br>max                                 | T   | $d_2$<br>max                                 | L<br>max   | Q<br>min   | q<br>≈  |
|                 | mm                    |   |  | mm  | mm   | mm   | kN   | kg/m  |
| UF922           | 9.525                 | 2x2   | 7.0  | 1.30  | 3.60   | 8.0  | 12.00  | 0.20  |
| UF944           |                       | 4x4   |  |   |  | 12.80  | 23.00  | 0.40  |
| UF966           |                       | 6x6   |  |   |  | 18.50  | 35.00  | 0.60  |
| UF988           |                       | 8x8   |  |   |  | 24.0   | 46.00  | 0.80  |
| UF1288          | 12.7                  | 8x8   | 10.2   | 1.4   | 4.45   | 25.9   | 72.00  | 1.50  |

**Catene ISO FLEYER serie LL / ISO LL Light Leaf Chains Series**

| Catena<br>Chain | Passo<br><i>Pitch</i> | Composizione<br>piastre<br><i>Plates<br/>lacing</i> | Altezza<br>piastra<br><i>Plate<br/>depth</i> | Spessore<br>piastra<br><i>Plate<br/>thickness</i> | Diametro<br>Perno<br><i>Pin<br/>diameter</i> | Largh.<br>catena<br>ribadita<br><i>Riveted<br/>chain width</i> | Carico di<br>rottura<br>min. ISO<br><i>Ultimate<br/>tensile<br/>strength<br/>ISO</i> | Carico di<br>rottura<br>medio<br><i>Average<br/>tensile<br/>strength</i> | Peso al<br>metro<br><i>Weight<br/>per meter</i> |
|-----------------|-----------------------|---|--|---|--|--|--|--|---|
|                 | P                     |   | $h_2$<br>max                                 | T   | $d_2$<br>max                                 | L<br>max   | Q<br>min   | $Q_0$  | q<br>≈  |
|                 | mm                    |   |  | mm  | mm   | mm   | kN   | kN   | kg/m  |
| LL0822          | 12.70                 | 2x2   | 10.92  | 1.30  | 4.45   | 7.60   | 17.80  | 20.40  | 0.40  |
| LL0844          |                       | 4x4   |  |   |  | 13.00  | 31.10  | 35.70  | 0.80  |
| LL0866          |                       | 6x6   |  |   |  | 18.40  | 44.50  | 51.20  | 1.20  |
| LL1022          | 15.875                | 2x2   | 13.72  | 1.65  | 5.08   | 9.30   | 22.20  | 25.50  | 0.50  |
| LL1044          |                       | 4x4   |  |   |  | 16.10  | 44.50  | 52.50  | 1.00  |
| LL1066          |                       | 6x6   |  |   |  | 22.90  | 66.70  | 76.70  | 1.50  |
| LL1222          | 19.05                 | 2x2   | 16.13  | 1.90  | 5.72   | 10.70  | 28.90  | 33.20  | 0.70  |
| LL1244          |                       | 4x4   |  |   |  | 18.50  | 57.80  | 66.40  | 1.30  |
| LL1266          |                       | 6x6   |  |   |  | 26.30  | 86.70  | 99.70  | 2.00  |
| LL1622          | 25.40                 | 2x2   | 21.08  | 3.20  | 8.28   | 17.20  | 58.00  | 66.70  | 1.50  |
| LL1644          |                       | 4x4   |  |   |  | 30.20  | 116.00   | 132.20   | 3.00  |
| LL1666          |                       | 6x6   |  |   |  | 43.20  | 174.00   | 198.30   | 4.40  |
| LL2022          | 31.75                 | 2x2   | 26.42  | 3.70  | 10.19  | 20.10  | 95.00  | 109.20   | 2.30  |
| LL2044          |                       | 4x4   |  |   |  | 35.10  | 190.00   | 218.50   | 4.40  |
| LL2066          |                       | 6x6   |  |   |  | 50.10  | 285.00   | 324.60   | 6.60  |
| LL2422          | 38.10                 | 2x2   | 33.40  | 5.20  | 14.63  | 28.40  | 170.00   | 195.50   | 4.40  |
| LL2444          |                       | 4x4   |  |   |  | 49.40  | 340.00   | 380.80   | 8.50  |
| LL2466          |                       | 6x6   |  |   |  | 70.40  | 510.00   | 571.20   | 12.50   |
| LL2822          | 44.45                 | 2x2   | 37.08  | 6.45  | 15.90  | 34.00  | 200.00   | 224.00   | 5.40  |
| LL2844          |                       | 4x4   |  |   |  | 60.00  | 400.00   | 448.00   | 10.50   |
| LL2866          |                       | 6x6   |  |   |  | 86.00  | 600.00   | 672.00   | 15.50   |
| LL3222          | 50.80                 | 2x2   | 42.29  | 6.45  | 17.81  | 35.00  | 260.00   | 291.20   | 6.20  |
| LL3244          |                       | 4x4   |  |   |  | 61.00  | 520.00   | 582.40   | 12.10   |
| LL3266          |                       | 6x6   |  |   |  | 87.00  | 780.00   | 873.60   | 18.00   |
| LL4022          | 63.50                 | 2x2   | 52.76  | 8.25  | 22.89  | 44.70  | 360.00   | 403.20   | 10.30   |
| LL4044          |                       | 4x4   |  |   |  | 77.90  | 780.00   | 873.60   | 20.00   |
| LL4066          |                       | 6x6   |  |   |  | 111.10   | 1080.00  | 1209.60  | 29.50   |
| LL4822          | 76.20                 | 2x2   | 63.88  | 10.30   | 29.24  | 56.10  | 560.00   | 627.20   | 18.50   |
| LL4844          |                       | 4x4   |  |   |  | 97.40  | 1120.00  | 1254.40  | 35.70   |
| LL4866          |                       | 6x6   |  |   |  | 138.90   | 1680.00  | 1880.10  | 53.00   |

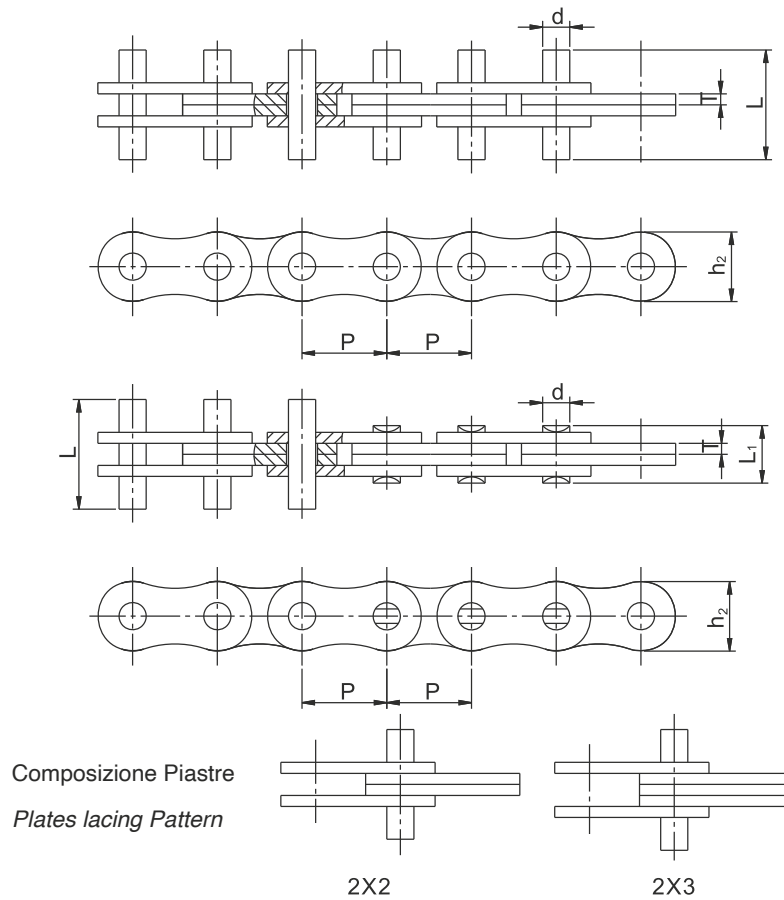
Catene ISO FLEYER serie BL / ISO LH (BL) Heavy Series Leaf Chains Series

| Catena<br>Chain | Catena<br>ISO<br>Chain | Passo<br>Pitch | Composizione<br>piastra<br>Plates<br>lacing | Altezza<br>piastra<br>Plate<br>depth | Spessore<br>piastra<br>Plate<br>thickness | Diametro<br>Perno<br>Pin<br>diameter | Largh.<br>catena<br>ribadita<br>Riveted<br>chain<br>width | Carico di<br>rottura<br>min. ISO<br>Ultimate<br>tensile<br>strength<br>ISO | Carico di<br>rottura<br>medio<br>Average<br>tensile<br>strength | Peso al<br>metro<br>Weight<br>per meter |
|-----------------|------------------------|----------------|---|--------------------------------------|---|--------------------------------------|---|--|---|---|
|                 |                        | P              |   | h <sub>2</sub><br>max                | T   | d <sub>2</sub><br>max                | L<br>max  | Q<br>min   | Q <sub>0</sub>  | q<br>≈                                  |
|                 |                        | mm             |   |                                      | mm  | mm                                   | mm  | mm   | kN  | kN                                      |
| LH0822          | BL422                  | 12.70          | 2x2   | 12.07                                | 2.08                                      | 5.09                                 | 11.05   | 22.20  | 27.60   | 0.60                                    |
| LH0823          | BL423                  |                | 2x3   |                                      |   |                                      | 13.16   | 22.20  | 27.60   | 0.75                                    |
| LH0834          | BL434                  |                | 3x4   |                                      |   |                                      | 17.40   | 33.40  | 41.40   | 1.03                                    |
| LH0844          | BL444                  |                | 4x4   |                                      |   |                                      | 19.51   | 44.50  | 56.00   | 1.17                                    |
| LH0846          | BL446                  |                | 4x6   |                                      |   |                                      | 23.75   | 44.50  | 56.00   | 1.46                                    |
| LH0866          | BL466                  |                | 6x6   |                                      |   |                                      | 27.99   | 66.70  | 81.70   | 1.74                                    |
| LH0888          | BL488                  |                | 8x8   |                                      |   |                                      | 36.45   | 89.00  | 109.40  | 2.33                                    |
| LH1022          | BL522                  | 15.875         | 2x2   | 15.09                                | 2.44                                      | 5.96                                 | 12.90   | 33.40  | 42.80   | 0.95                                    |
| LH1023          | BL523                  |                | 2x3   |                                      |   |                                      | 15.37   | 33.40  | 42.80   | 1.17                                    |
| LH1034          | BL534                  |                | 3x4   |                                      |   |                                      | 20.32   | 48.90  | 63.60   | 1.63                                    |
| LH1044          | BL544                  |                | 4x4   |                                      |   |                                      | 22.78   | 66.70  | 84.50   | 1.85                                    |
| LH1046          | BL546                  |                | 4x6   |                                      |   |                                      | 27.74   | 66.70  | 84.50   | 2.31                                    |
| LH1066          | BL566                  |                | 6x6   |                                      |   |                                      | 32.69   | 100.10   | 125.10  | 2.76                                    |
| LH1088          | BL588                  |                | 8x8   |                                      |   |                                      | 42.57   | 133.40   | 169.50  | 3.67                                    |
| LH1222          | BL622                  | 19.05          | 2x2   | 18.11                                | 3.30                                      | 7.94                                 | 17.37   | 48.90  | 63.60   | 1.55                                    |
| LH1223          | BL623                  |                | 2x3   |                                      |   |                                      | 20.73   | 48.90  | 63.60   | 1.92                                    |
| LH1234          | BL634                  |                | 3x4   |                                      |   |                                      | 27.43   | 75.60  | 102.60  | 2.67                                    |
| LH1244          | BL644                  |                | 4x4   |                                      |   |                                      | 30.78   | 97.90  | 122.30  | 3.02                                    |
| LH1246          | BL646                  |                | 4x6   |                                      |   |                                      | 37.49   | 97.90  | 122.30  | 3.75                                    |
| LH1266          | BL666                  |                | 6x6   |                                      |   |                                      | 44.20   | 146.80   | 190.80  | 4.50                                    |
| LH1288          | BL688                  |                | 8x8   |                                      |   |                                      | 57.61   | 195.70   | 238.80  | 6.01                                    |
| LH1622          | BL822                  | 25.40          | 2x2   | 24.13                                | 4.09                                      | 9.54                                 | 21.34   | 84.50  | 108.20  | 2.43                                    |
| LH1623          | BL823                  |                | 2x3   |                                      |   |                                      | 25.48   | 84.50  | 108.20  | 3.02                                    |
| LH1634          | BL834                  |                | 3x4   |                                      |   |                                      | 33.76   | 129.00   | 143.60  | 4.20                                    |
| LH1644          | BL844                  |                | 4x4   |                                      |   |                                      | 37.90   | 169.00   | 214.60  | 4.77                                    |
| LH1646          | BL846                  |                | 4x6   |                                      |   |                                      | 46.18   | 169.00   | 214.60  | 5.90                                    |
| LH1666          | BL866                  |                | 6x6   |                                      |   |                                      | 54.46   | 253.60   | 324.50  | 7.10                                    |
| LH1688          | BL888                  |                | 8x8   |                                      |   |                                      | 71.02   | 338.10   | 432.70  | 9.43                                    |
| LH2022          | BL1022                 | 31.75          | 2x2   | 30.18                                | 4.90                                      | 11.11                                | 25.37   | 115.60   | 146.80  | 3.60                                    |
| LH2023          | BL1023                 |                | 2x3   |                                      |   |                                      | 30.33   | 115.60   | 146.80  | 4.50                                    |
| LH2034          | BL1034                 |                | 3x4   |                                      |   |                                      | 40.23   | 182.40   | 231.60  | 6.25                                    |
| LH2044          | BL1044                 |                | 4x4   |                                      |   |                                      | 45.19   | 231.30   | 291.40  | 7.10                                    |
| LH2046          | BL1046                 |                | 4x6   |                                      |   |                                      | 55.09   | 231.30   | 291.40  | 8.90                                    |
| LH2066          | BL1066                 |                | 6x6   |                                      |   |                                      | 65.00   | 347.00   | 430.30  | 10.60                                   |
| LH2088          | BL1088                 |                | 8x8   |                                      |   |                                      | 84.81   | 462.60   | 555.10  | 14.10                                   |

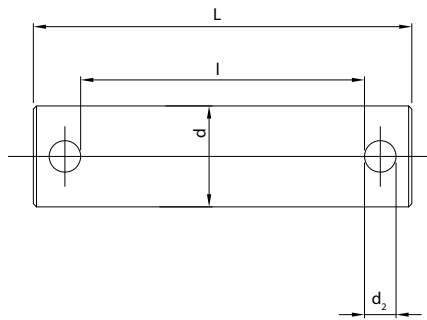
**Catene ISO FLEYER serie BL / ISO LH (BL) Heavy Series Leaf Chains Series**

| Catena<br>Chain | Catena<br>ISO<br>Chain | Passo<br>Pitch | Composizione<br>piastre<br>Plates<br>lacing | Altezza<br>piastra<br>Plate<br>depth | Spessore<br>piastra<br>Plate<br>thickness | Diametro<br>Perno<br>Pin<br>diameter | Largh.<br>catena<br>ribadita<br>Riveted<br>chain<br>width | Carico di<br>rottura<br>min. ISO<br>Ultimate<br>tensile<br>strength<br>ISO | Carico di<br>rottura<br>medio<br>Average<br>tensile<br>strength | Peso al<br>metro<br>Weight<br>per meter |
|-----------------|------------------------|----------------|---|--------------------------------------|---|--------------------------------------|---|--|---|---|
|                 |                        | P              |   | $h_2$<br>max                         | T   | $d_2$<br>max                         | L<br>max  | Q<br>min   | Q <sub>0</sub>  | q<br>≈                                  |
|                 |                        | mm             |   |                                      | mm  | mm                                   | mm  | mm   | kN  | kN                                      |
| LH2422          | BL1222                 | 38.10          | 2x2   | 36.20                                | 5.77                                      | 12.71                                | 29.62   | 151.20   | 192.00  | 5.40                                    |
| LH2423          | BL1223                 |                | 2x3   |                                      |   |                                      | 35.43   | 151.20   | 192.00  | 6.70                                    |
| LH2434          | BL1234                 |                | 3x4   |                                      |   |                                      | 47.07   | 244.60   | 308.10  | 9.30                                    |
| LH2444          | BL1244                 |                | 4x4   |                                      |   |                                      | 52.88   | 302.50   | 381.10  | 10.60                                   |
| LH2446          | BL1246                 |                | 4x6   |                                      |   |                                      | 64.52   | 302.50   | 381.10  | 13.30                                   |
| LH2466          | BL1266                 |                | 6x6   |                                      |   |                                      | 76.15   | 453.70   | 543.60  | 15.90                                   |
| LH2488          | BL1288                 |                | 8x8   |                                      |   |                                      | 99.42   | 605.00   | 726.00  | 21.10                                   |
| LH2822          | BL1422                 | 44.45          | 2x2   | 42.24                                | 6.55                                      | 14.29                                | 33.55   | 191.30   | 225.70  | 7.05                                    |
| LH2823          | BL1423                 |                | 2x3   |                                      |   |                                      | 40.16   | 191.30   | 225.70  | 8.75                                    |
| LH2834          | BL1434                 |                | 3x4   |                                      |   |                                      | 53.37   | 315.80   | 372.60  | 12.20                                   |
| LH2844          | BL1444                 |                | 4x4   |                                      |   |                                      | 59.97   | 382.60   | 451.20  | 13.90                                   |
| LH2846          | BL1446                 |                | 4x6   |                                      |   |                                      | 73.18   | 382.60   | 451.20  | 17.30                                   |
| LG2866          | BL1466                 |                | 6x6   |                                      |   |                                      | 86.39   | 578.30   | 682.40  | 20.70                                   |
| LH2888          | BL1488                 |                | 8x8   |                                      |   |                                      | 112.80  | 765.10   | 902.80  | 27.50                                   |
| LH3222          | BL1622                 | 50.80          | 2x2   | 48.26                                | 7.52                                      | 17.46                                | 39.01   | 289.10   | 341.10  | 9.14                                    |
| LH3223          | BL1623                 |                | 2x3   |                                      |   |                                      | 46.58   | 289.10   | 341.10  | 11.34                                   |
| LH3234          | BL1634                 |                | 3x4   |                                      |   |                                      | 61.72   | 440.40   | 519.60  | 15.75                                   |
| LH3244          | BL1644                 |                | 4x4   |                                      |   |                                      | 69.29   | 578.30   | 680.40  | 17.95                                   |
| LH3246          | BL1646                 |                | 4x6   |                                      |   |                                      | 84.43   | 578.30   | 680.40  | 22.36                                   |
| LH3266          | BL1666                 |                | 6x6   |                                      |   |                                      | 99.57   | 857.40   | 1000.70   | 26.77                                   |
| LH3288          | BL1688                 |                | 8x8   |                                      |   |                                      | 129.84  | 1156.50  | 1364.60   | 35.60                                   |
| LH4022          | BL2022                 | 63.50          | 2x2   | 60.33                                | 9.91                                      | 23.81                                | 51.74   | 433.70   | 511.70  | 15.80                                   |
| LH4023          | BL2023                 |                | 2x3   |                                      |   |                                      | 61.70   | 433.70   | 511.70  | 19.80                                   |
| LH4034          | BL2034                 |                | 3x4   |                                      |   |                                      | 81.61   | 649.40   | 766.20  | 27.70                                   |
| LH4044          | BL2044                 |                | 4x4   |                                      |   |                                      | 91.57   | 867.40   | 1023.50   | 31.60                                   |
| LH4046          | BL2046                 |                | 4x6   |                                      |   |                                      | 111.48  | 867.40   | 1023.50   | 39.50                                   |
| LH4066          | BL2066                 |                | 6x6   |                                      |   |                                      | 131.39  | 1301.10  | 1535.20   | 47.40                                   |
| LH4088          | BL2088                 |                | 8x8   |                                      |   |                                      | 171.22  | 1734.80  | 2046.50   | 63.20                                   |

Catene **FLEYER** a perni sporgenti / **Wrench** Leaf Chains



| Catena<br>Chain        | Passo<br>Pitch | Composizione<br>piastre<br>Plates<br>lacing | Altezza<br>piastra<br>Plate<br>depth | Spessore<br>piastra<br>Plate<br>thickness | Diametro<br>Perno<br>Pin<br>diameter | Largh. catena<br>ribadita<br>Riveted<br>chain width |              | Carico di<br>rottura<br>min.<br>Ultimate<br>tensile<br>strength | Peso al<br>metro<br>Weight<br>per meter |
|------------------------|----------------|---|--------------------------------------|---|--------------------------------------|---|--------------|---|---|
|                        | P              |   | $h_2$<br>max                         | T   | d<br>max                             | L<br>max  | $L_1$<br>max | Q<br>min  | q<br>≈                                  |
|                        | mm             |   |                                      | mm  | mm                                   | mm  | mm           | kN  | kg/m                                    |
| AL522a                 | 15.875         | 2x2   | 13.03                                | 2.06                                      | 5.08                                 | 20.50   | -            | 24.50   | 0.77                                    |
| AL522b                 |                |   |                                      |   |                                      | 17.20   | -            | 24.50   | 0.70                                    |
| AL522WR-16             |                |   |                                      |   |                                      | 16.00   | -            | 21.80   | 0.72                                    |
| AL522WR-1<br>1.02/20.5 |                |   |                                      |   |                                      | 20.50   | 11.02        | 21.80   | 0.73                                    |
| AL622a                 | 19.05          | 2x2   | 15.62                                | 3.26                                      | 5.94                                 | 23.30   | 16.30        | 44.10   | 1.07                                    |
| AL622b                 |                |   |                                      | 2.44                                      | 5.94                                 |   | -            | 33.35   | 0.88                                    |
| AL822a                 | 25.40          | 2x2   | 20.83                                | 3.26                                      | 7.92                                 | 30.00   | -            | 55.60   | 1.73                                    |
| BL622a                 | 19.05          | 2x2   | 18.11                                | 3.26                                      | 7.92                                 | 29.00   | -            | 48.90   | 1.81                                    |
| BL822a                 | 25.40          | 2x2   | 24.13                                | $T_1:3.70$<br>$T_2:4.09$                  | 9.54                                 | 36.00   | -            | 169.00  | 2.82                                    |
| BL823a                 |                | 2x3   |                                      | 4.09                                      |                                      | 34.00   | -            | 98.00   | 3.40                                    |
| LL1022a                | 15.875         | 2x2   | 13.72                                | 1.70                                      | 5.08                                 | 14.00   | -            | 22.20   | 0.64                                    |

**Perni per catene FLEYER / FLEYER Pins**

**Perni per catene FLEYER / FLEYER pins**

| Catena<br>Chain | L<br>max<br>(mm) | l<br>min<br>(mm) | d<br>max<br>(mm) | d <sub>2</sub><br>(mm) |
|-----------------|------------------|------------------|------------------|------------------------|
| AL422           | 15.00            | 10.00            | 3.96             | 1.20                   |
| AL444           | 22.00            | 16.00            | 3.96             | 1.20                   |
| AL466           | 30.50            | 24.35            | 3.96             | 1.20                   |
| AL488           | 35.50            | 30.45            | 3.96             | 1.20                   |
| BL422/AL522     | 15.00            | 9.00             | 5.08             | 1.60                   |
| BL423           | 17.40            | 9.30             | 5.08             | 1.60                   |
| BL434           | 23.00            | 18.00            | 5.08             | 1.60                   |
| BL444/AL544     | 25.00            | 19.00            | 5.08             | 1.60                   |
| BL446           | 32.00            | 23.00            | 5.08             | 1.60                   |
| BL466           | 29.00            | 25.00            | 5.08             | 1.60                   |
| BL466/AL566     | 33.50            | 27.50            | 5.08             | 1.60                   |
| BL488/AL588     | 41.80            | 35.80            | 5.08             | 1.60                   |
| BL522           | 17.00            | 10.50            | 5.94             | 2.00                   |
| BL523           | 19.00            | 12.00            | 5.94             | 2.00                   |
| BL534           | 27.70            | 17.50            | 5.94             | 2.00                   |
| BL544/AL644     | 29.00            | 22.50            | 5.94             | 2.00                   |
| BL546           | 33.50            | 27.10            | 5.94             | 2.00                   |
| BL566/AL666     | 36.50            | 28.90            | 5.94             | 2.00                   |
| BL566/AL666     | 39.00            | 32.00            | 5.94             | 2.00                   |
| BL588/AL688     | 49.30            | 43.10            | 5.94             | 2.00                   |
| BL623           | 25.50            | 17.50            | 7.92             | 3.20                   |
| BL634           | 32.50            | 23.50            | 7.92             | 3.20                   |
| BL634           | 37.80            | 27.00            | 7.92             | 3.20                   |
| BL644/AL844     | 34.50            | 26.00            | 7.92             | 3.20                   |
| BL646           | 42.00            | 33.50            | 7.92             | 3.20                   |
| BL646           | 47.4             | 36.60            | 7.92             | 3.20                   |
| BL666/AL866     | 53.50            | 43.00            | 7.92             | 3.20                   |
| AL888           | 61.00            | 52.00            | 7.92             | 3.20                   |
| BL688           | 67.00            | 56.20            | 7.92             | 3.20                   |
| BL822           | 28.00            | 18.00            | 9.53             | 3.20                   |
| BL823           | 35.50            | 26.00            | 9.53             | 3.20                   |
| BL834           | 40.70            | 30.00            | 9.53             | 3.20                   |
| AL1044          | 43.50            | 32.50            | 9.53             | 3.20                   |
| BL834           | 43.80            | 34.00            | 9.53             | 3.20                   |
| BL844           | 47.80            | 37.10            | 9.53             | 3.20                   |

| Catena<br>Chain | L<br>max<br>(mm) | l<br>min<br>(mm) | d<br>max<br>(mm) | d <sub>2</sub><br>(mm) |
|-----------------|------------------|------------------|------------------|------------------------|
| BL846           | 52.00            | 41.50            | 9.53             | 3.20                   |
| BL846           | 57.00            | 46.00            | 9.53             | 3.20                   |
| BL866/AL1066    | 64.00            | 54.00            | 9.53             | 3.20                   |
| BL888           | 76.00            | 65.00            | 9.53             | 3.20                   |
| AL1088          | 80.00            | 70.00            | 9.53             | 3.20                   |
| BL1023          | 36.50            | 25.00            | 11.10            | 4.00                   |
| BL1034          | 49.50            | 35.00            | 11.10            | 4.00                   |
| BL1044/AL1244   | 51.50            | 40.50            | 11.10            | 4.00                   |
| BL1046          | 63.00            | 52.00            | 11.10            | 4.00                   |
| BL1066/AL1266   | 76.60            | 61.50            | 11.10            | 4.00                   |
| BL1088/AL1288   | 95.00            | 82.00            | 11.10            | 4.00                   |
| BL1223          | 42.00            | 29.00            | 12.70            | 4.00                   |
| BL1234          | 53.00            | 40.00            | 12.70            | 4.00                   |
| BL1244/AL1444   | 59.00            | 45.50            | 12.70            | 4.00                   |
| BL1246          | 71.00            | 56.00            | 12.70            | 4.00                   |
| BL1266/AL1466   | 82.00            | 68.00            | 12.70            | 4.00                   |
| BL1288/AL1488   | 111.00           | 99.00            | 12.70            | 4.00                   |
| BL1423          | 46.00            | 32.00            | 14.27            | 4.00                   |
| BL1434          | 59.50            | 45.00            | 14.27            | 4.00                   |
| BL1444          | 69.50            | 55.00            | 14.27            | 4.00                   |
| BL1446          | 84.00            | 65.00            | 14.27            | 4.00                   |
| BL1466          | 98.00            | 85.00            | 14.27            | 4.00                   |
| AL1666          | 100.90           | 93.00            | 14.27            | 4.00                   |
| AL1688          | 111.80           | 101.90           | 14.27            | 4.00                   |
| BL1623          | 55.80            | 38.00            | 17.46            | 5.00                   |
| BL1634          | 71.00            | 52.00            | 17.46            | 5.00                   |
| BL1644          | 78.00            | 61.00            | 17.46            | 5.00                   |
| BL1646          | 93.00            | 76.00            | 17.46            | 5.00                   |
| BL1666          | 112.00           | 95.20            | 17.46            | 5.00                   |
| BL1688          | 139.50           | 95.20            | 17.46            | 5.00                   |
| UF922           | 17.55            | 11.45            | 3.59             | 1.25                   |
| UF923           | 20.10            | 14.10            | 3.59             | 1.25                   |
| UF944           | 23.15            | 17.05            | 3.59             | 1.25                   |
| UF966           | 30.45            | 24.35            | 3.59             | 1.25                   |
| UF988           | 35.65            | 29.55            | 3.59             | 1.25                   |